

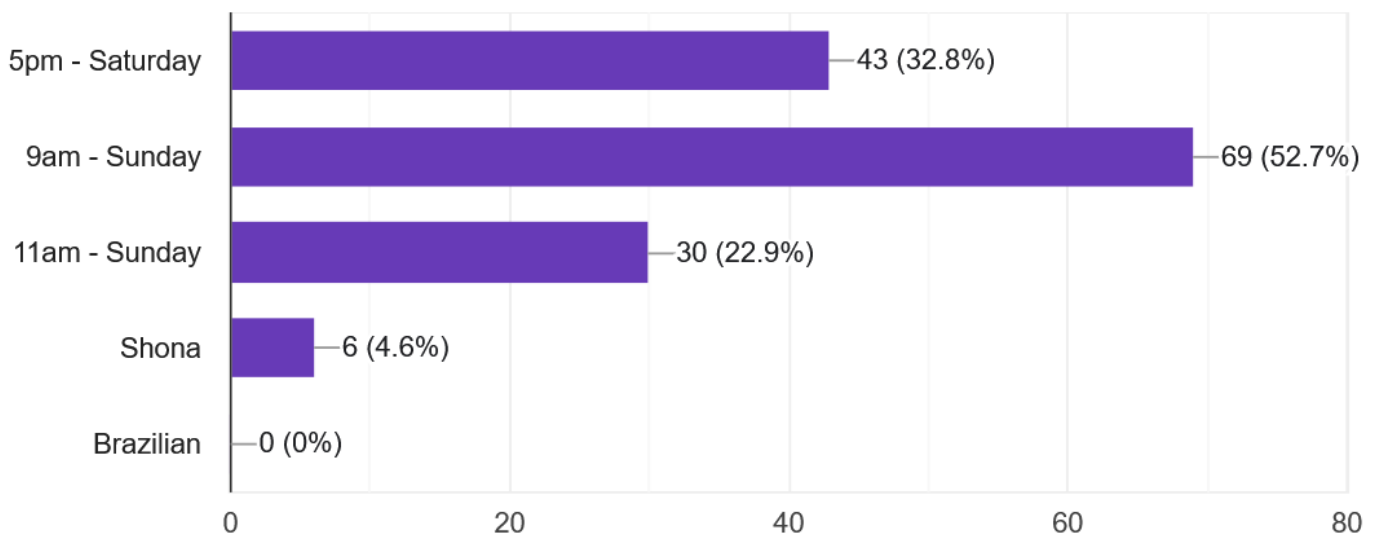
SUMMARY OF ST GREGORY'S PARISH SURVEY 2024

During February 2024 this survey was distributed in the parish seeking responses to the questions below. Here follows a brief summary of the 134 surveys that were completed on paper and online. Thank you so much to all those who completed forms, and we look forward to gathering as a parish to discuss and pray about how St Gregory's might go forward together.

PART 1: QUANTITATIVE RESULTS

1. Which weekend Mass(es) do you usually attend?

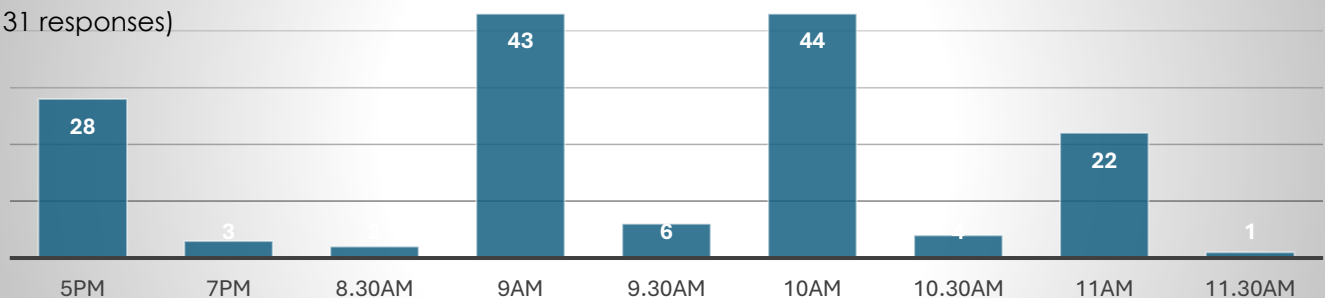
(131 responses)



A good number from each congregation filled in the survey. The reach could have been improved to ethnic masses (especially Brazilian) and, in hindsight, include promotion in the school.

2. If there was one weekend Mass, due to shortages, what time would you prefer?

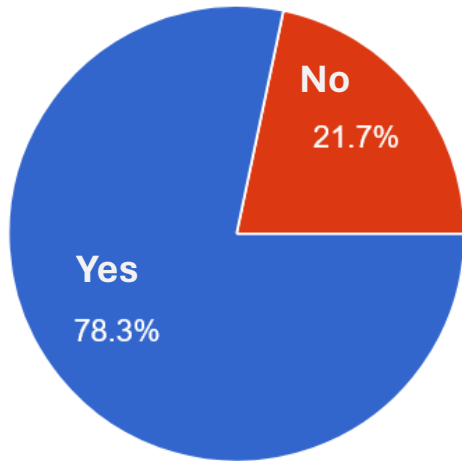
(131 responses)



There was a preference for an early to mid Sunday morning parish Mass. This will be communicated to the Dean and hopefully considered when any decision is made regarding Mass provision.

3. Would you like a Sunday Mass readings sheet again?

(129 responses)

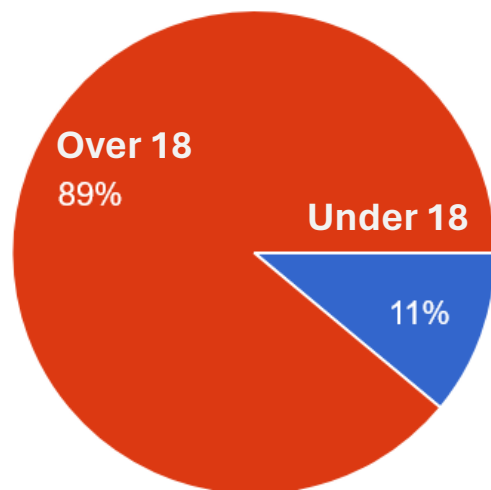


This question returned a clear preference for regular Sunday Mass readings sheet. Research will take place to compare prices with an eye to minimise wastage, and for potential space for notices too.

Additional Data

Age. Are you...

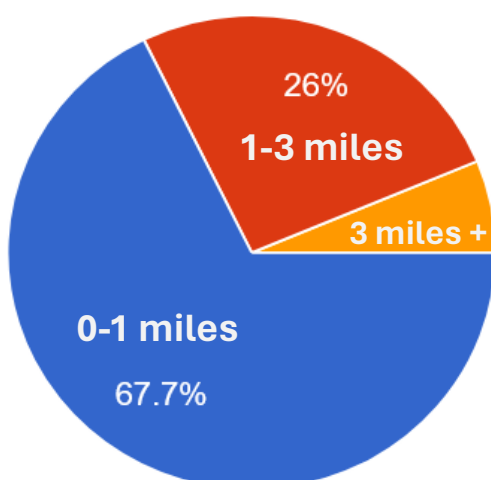
(127 responses)



It was very encouraging to see that more than 1-in-10 respondents were under 18 years old, with the majority likely to be teenagers.

How far do you travel to church?

(127 responses)



Over two thirds of respondents live within the parish, or close by.

DIOCESAN VISION & MISSION STATEMENTS

In 2021, Archbishop Bernard launched our Diocesan Vision for Birmingham. This is his dream for what the church in our diocese is called to be in the future. It is included here so that St Gregory's can consider how our survey results might help to realise that future in Bearwood.

OUR DIOCESAN VISION

*We are called to be a Catholic diocese which is:
faithful to the mission entrusted to us by Jesus Christ
full of missionary disciples who work together
co-responsibly in vibrant communities of faith,
joyful in their service of God and neighbour.*

DIOCESAN MISSION STATEMENT

*To support and mobilise all in the diocese
to become true missionary disciples.*

DIOCESAN VISION THEMES

*Evangelisation, Formation, Liturgy & Worship,
Social Outreach, Young People & Families.*

PART 2: QUALITATIVE RESULTS

Three questions were posed, asking parishioners about:

- 4) what they already do at St Gregory's,**
- 5) what gifts & skills they could bring to bear in our parish,**
- 6) a dream they have for the future of the parish.**

OUR DIOCESAN VISION THEMES

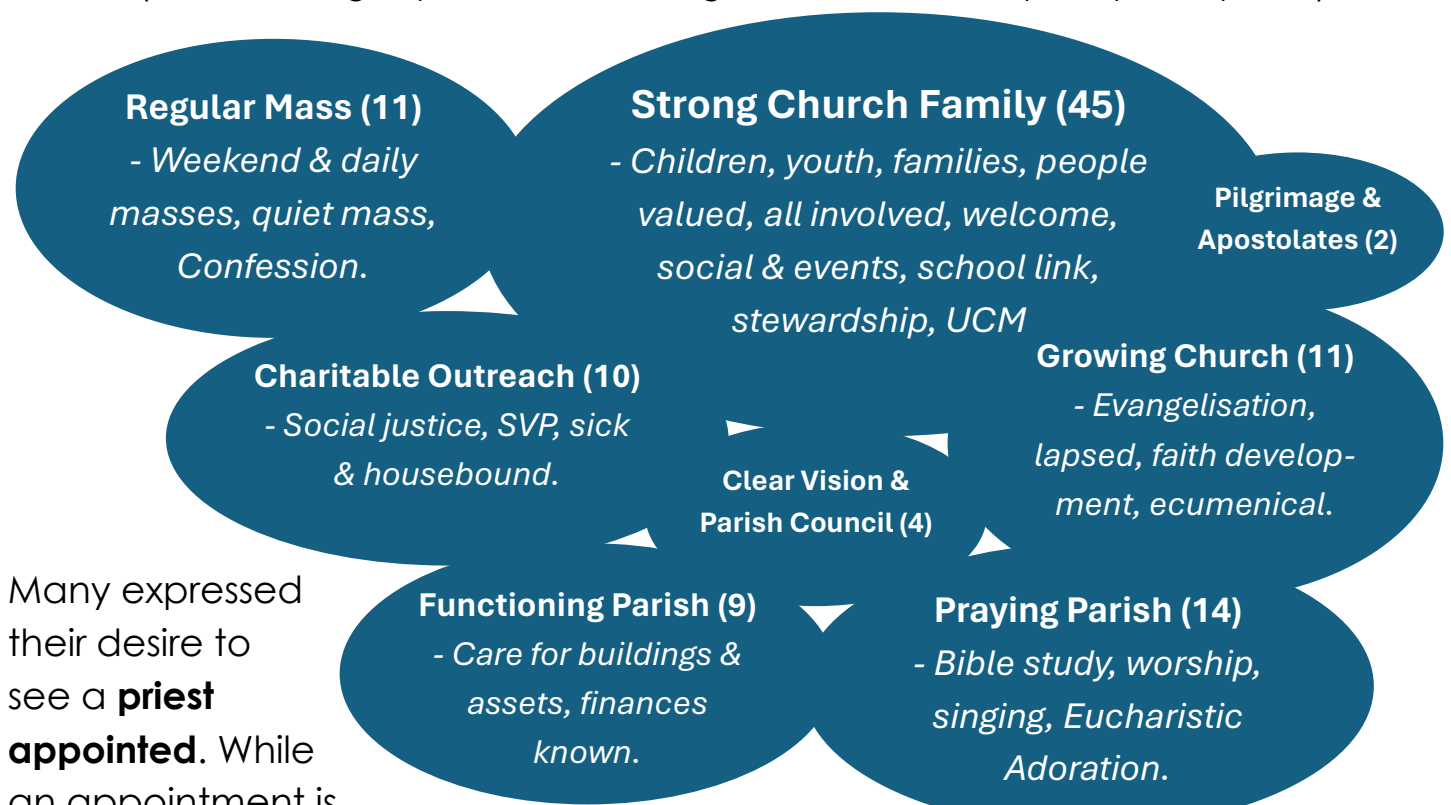
The Diocesan **Vision Themes** give some useful headings under which to group people's answers, helping to see what is already strong, and which areas might need investing in. Questions 4 & 5 are represented in the table overleaf.

KEY TO ANSWERS BELOW (Questions 4 & 5)

- [Regular] - Ministries/jobs that people already do.
[Bold-Italic] - Ministries/jobs that people indicate they already do and/or might consider doing within the parish.

EVANGELISATION & FORMATION	Sycamore, catechesis, Sunday refreshments, teaching.
LITURGY & WORSHIP	Collections, Eucharistic ministers, prayer meetings/Zooms, musicians, readers, servers, singers, welcomer, choir, helping children serve, sing and read, liturgy.
SOCIAL OUTREACH <i>(including other types of service)</i>	Cleaning, flowers, counters and finance, Missio, refreshments, Lourdes, administration, Giving (covenant), UCM, social activities, helping homeless, listening, school/parish link, CAFOD, mental health.
YOUNG PEOPLE & FAMILIES	Helping with children, safeguarding, teaching experience.
OTHER	Creative crafts, hospitality, strategy, IT, web design, administration, transport.

6. What is your dream for our parish? What should our priorities be for the future? (Answers are grouped under headings. Size indicates frequency of response)



Many expressed their desire to see a **priest appointed**. While an appointment is planned, it is unclear whether he will be resident or based nearby.